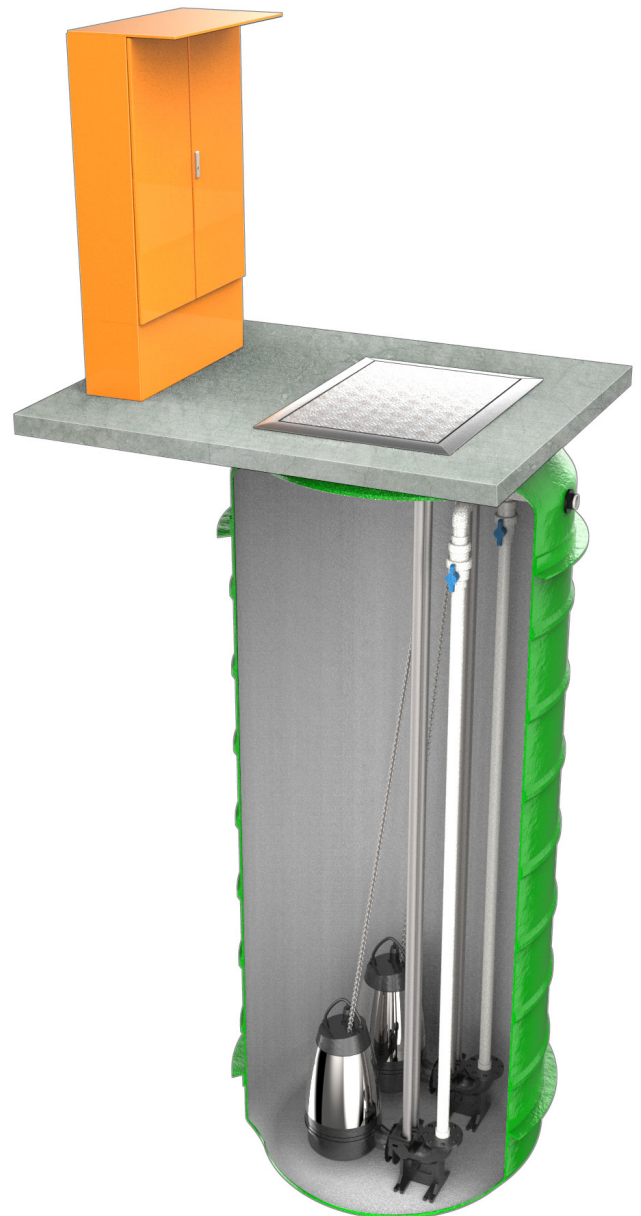


## Configuration

Vertical pump station with internal valves

## Features & Benefits

- Fully engineered one piece construction – no assembly on site
- Small footprint required – saves space
- Comparatively light weight – requires light crane
- Diameters up to 4,000mm (subject to delivery arrangements)
- Standard depths to 5,000mm, greater on request (subject to delivery arrangements)
- Inlet can be installed by plumber
- All penetrations can be cast in as per customer specifications
- Single, dual or triplex pump configurations
- Free-standing or guide rail mounted pump systems



*\*Illustrative purposes only*