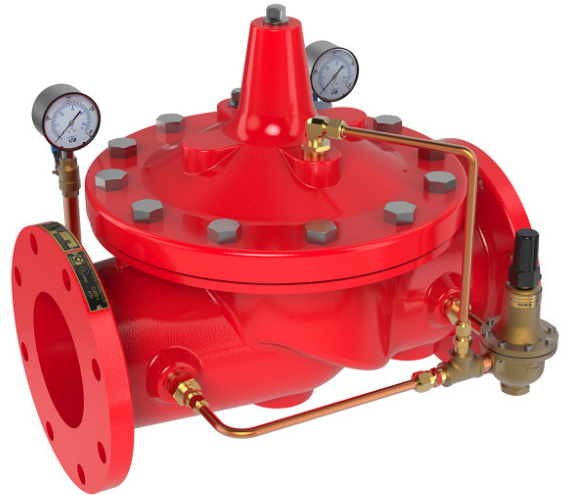


Pressure Reducing Valves

Cla-Val Pressure Reducing Valves automatically reduce a higher inlet pressure to a steady lower outlet pressure regardless of changing flow rate and/or varying inlet pressure. The valves pilot control system is very sensitive to slight downstream pressure fluctuations, and will automatically open or close to maintain the desired pressure setting. The downstream pressure can be set over a wide range by turning the adjustment screw on the CRD pilot control. The adjustment screw is protected by a screw-on cover, which can be sealed to discourage tampering.

Features

- Highly reliable and easy to maintain
- Globe or Angle pattern
- Accurate pressure control
- Roll Grooved connections available (1-1/2" - 8")
- The downstream pressure can be set over a wide range by turning the adjustment screw on the CRD pilot control
- Tamper-proof cover to protect adjustment screw



Specifications

- Standard Materials:**
- Main Valve Body & Cover:
 - Ductile Iron ASTM A536 Grade 65-45-12
 - Standard Main Valve Trim:
 - Stainless Steel Seat
 - Stainless Steel Stem
 - Standard Pilot Control System:
 - Cast Bronze with Stainless Steel Trim

Temperature range: Water to 80°C Maximum

Pressure Differential: 10 PSI Minimum

Sizes: 1 1/2", 2", 2 1/2", 3", 4", 6", 8", 10"



Pressure Relief Valves

The Cla-Val Pressure Relief Valve series are a hydraulically operated, pilot-controlled, modulating valve designed to maintain constant upstream pressure within close limits. This valve can be used for pressure relief, pressure sustaining, back pressure, or unloading functions in a by-pass system. In operation, the valve is actuated by line pressure through a pilot control system, opening fast to maintain steady line pressure but closing gradually to prevent surges. Operation is completely automatic and pressure settings may be easily changed.

Features

- Accurate pressure control
- Optional check feature
- Fast opening to maintain line pressure
- Slow closing to prevent surges
- Completely automatic operation
- Tamper-proof cover to protect adjustment screw



Specifications

Pressure Rating:	16 bar
Minimum Opening Pressure:	0.7 bar
Minimum Velocity:	0.5 m/s
Maximum Continuous Velocity:	8 m/s
Maximum Temperature:	Water to 70°C Maximum
Sizes (Threaded):	25 - 65mm BSP
Sizes (Roll Grooved):	50 - 200mm
Sizes (Flanged):	80 - 200mm (150 PN16 / AS4087 PN16 / ANSI 150)

Typical Application

